



PACIFIC ODYSSEY 33



INTRODUCTION

The Odyssey Hovercraft is a 33 seat fully amphibious hovercraft powered by twin marine diesel engines. Each engine is connected via toothed drive belts and pulleys to the lift and thrust fans. The thrust fan is of advanced slow speed composite type with fully variable/reversible pitch.

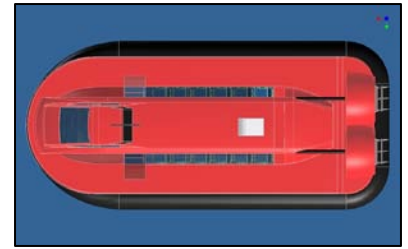
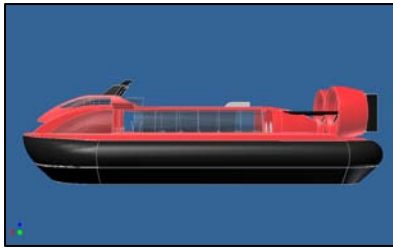
The streamlined aerodynamic hull is manufactured according to standard marine composite techniques using high quality fibreglass, resins, and foam laminates. Integral buoyancy compartments provide excellent reserve floatation.

The control position is mounted forward and high to give the pilot superb forward and rear visibility. A steering wheel operates slipstream mounted rudders to control heading. Elevators, variable pitch propellers, internal ballast movement, and skirt shift further enhance controllability of the craft. The instrument panel contains full instrumentation indicating engine and craft performance parameters. Opening side windows for the pilot with cabin air conditioning and heating provided as standard for passenger comfort.

PACIFIC ODYSSEY 33

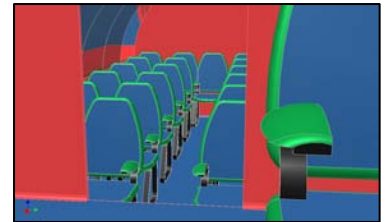
SPECIFICATIONS & FEATURES

LENGTH.....14m
WIDTH.....5.5m
HEIGHT.....3m
WEIGHT.....3750kg empty
PAYLOAD.....2700kg max
CUSHION HEIGHT.....0.7m hard structure
WAVE HEIGHT.....1.5m
SPEED.....Max 40 knots

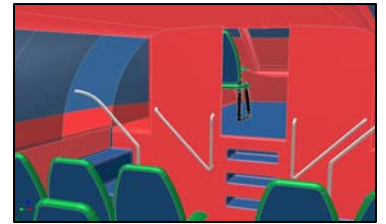


HULL - Fiberglass construction with Kevlar reinforcing and hard wearing 2 pack epoxy finish. All hand laid Double Bias 600 gm glass and polyester resin. Glass/foam laminate vacuum bagged hull for strength and lightness. Extreme impact and abrasion resistance and easy to repair. Replaceable PTFE landing pads. Four combination mooring cleats and lifting points. Front and rear stainless towing eyes. Anchor, chain and 100m rope supplied.

CABIN - 31 passengers, 2 crew. Large curved high visibility laminated automotive windscreen. Large side windows with minimal vision loss due to struts. High quality Faria USA marine cockpit gauges. Aerodynamically smooth cabin lines. Comfortable velour covered passenger seats are removable to provide a large cargo space.



COCKPIT - Pilot and Co-pilot seats. Window wiper/washer system. Air-conditioning and heating option. Anti-fogging windscreen de-mister vents. Internal cabin light. Automotive style steering wheel with fingertip thrust pitch buttons. Hydraulically operated steering vanes, reverse pitch. Four on board ballast tanks with high volume pump transfer.



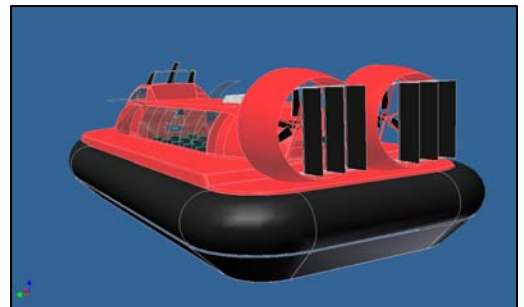
POWER – Twin Cummins ISB275 diesel engines -275hp at 2200rpm. Turbocharged and intercooled. Stainless Steel Exhaust System. Closed circuit liquid cooling with electric fans. Coalescer panel to remove airborne salt spray for engine bay component protection. Engine compartment gas sensor

FLEXIBLE SKIRT - Superior full flow bag/segment skirt system giving excellent stability at speed with the bag acting as a protective fender. Manufactured from Neoprene/Nylon with anti-bounce web and reinforced neoprene segments. Strong, easily repaired material with all seams hot bonded for maximum strength and durability.

ELECTRICAL - Full marine navigation lights. Handheld spotlight. Roof mounted 100W floodlights (4). Two roof mounted 100 watt halogen spotlights. 12 Volt electrical system with 60 amp alternator. Triple high amperage marine batteries. Amber strobe light. Bilge pumps (engine bay and cabin). Fire extinguishers(2).

SAFETY EQUIPMENT - Liferaft (2x 18pax) First aid box (Marine Lloyds Register), Woolen blankets in waterproof container (10) Flares (PB Kit), Throw bag with 10m rope, Life Buoys (2xSolas 75mm dia).

TRANSMISSION - Centrifugal clutch engagement. Drive shaft transmission for clean fan intakes. Gates Polychain GT2 Kevlar Aramid toothed drive belts and pulleys. All rotating parts rubber mounted to minimize hull vibration



PROPULSION - Twin low speed 1600mm propellers offer low noise levels with fully reversible pitch control. High quality bearings. Fully enclosed within ducts and safety screens on all air intakes.

LIFT - Twin high flow aerofoil section 800mm centrifugal fans. Strong non-corroding composite construction. High efficiency and quietness.

FUEL CAPACITY - Diesel. 500 litre fuel tank mounted amidships provides fuel for up to 6 hours cruising. Longer range fuel tanks available.

FUEL CONSUMPTION - 88 litres per hour average (70% power)

NOISE LEVEL – Est. at cruise speed 20m/80dBA

SHIPPING - The Odyssey may be shipped as deck cargo.

